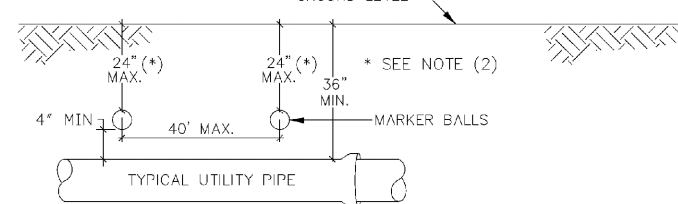


NOTES:
WHEN CONDITIONS PERMIT, PIPE DEFLECTION MAY BE USED INSTEAD OF BENDS TO OBTAIN THE MINIMUM CLEARANCE. FACTORY OFFSETS MAY BE USED.

TYPICAL CONFLICT DETAIL

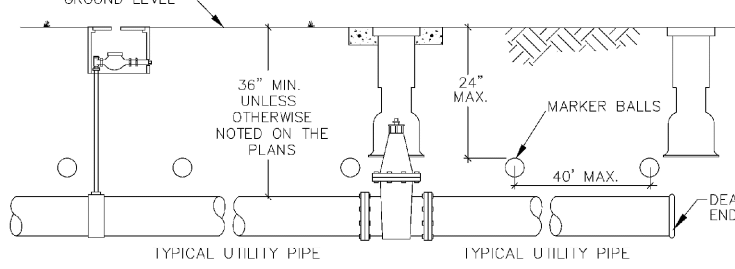
ENGINEERING STANDARDS 2022			
REVISIONS	BY	DATE	ENGINEERING DIVISION
	S.S.	JUNE 2022	CITY OF POMPAÑO BEACH
	S.S.	06/23/22	
SCALE: N.T.S.		DATE: JUNE 2022	206-1



GENERAL NOTES:
1. ALL UTILITY PIPE SHALL BE INSTALLED WITH 4\"/>

SEWER PIPE IDENTIFICATION

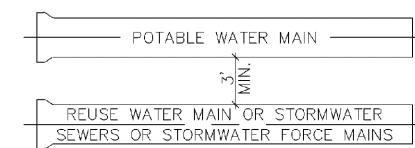
ENGINEERING STANDARDS 2022			
REVISIONS	BY	DATE	ENGINEERING DIVISION
	S.S.	06/23/22	CITY OF POMPAÑO BEACH
SCALE: N.T.S.		DATE: JUNE 2022	207-1



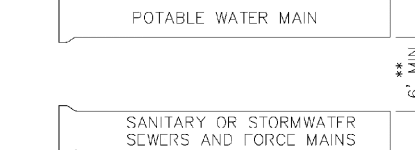
GENERAL NOTES:
1. ALL NONMETALLIC PIPE SHALL BE INSTALLED WITH 12 THIN SOLID COPPER TRACING WIRE.
2. THE MARKER BALLS MUST BE INSTALLED DIRECTLY ABOVE THE PIPE.
3. MARKER BALLS SHALL BE INSTALLED AT 40' O.C.
4. BALL COLOR CODING:
SANITARY SEWER SYSTEM: GREEN

UTILITY PIPE AND MARKER BALLS LOCATION

ENGINEERING STANDARDS 2022			
REVISIONS	BY	DATE	ENGINEERING DIVISION
	S.S.	06/23/22	CITY OF POMPAÑO BEACH
SCALE: N.T.S.		DATE: JUNE 2022	208-1



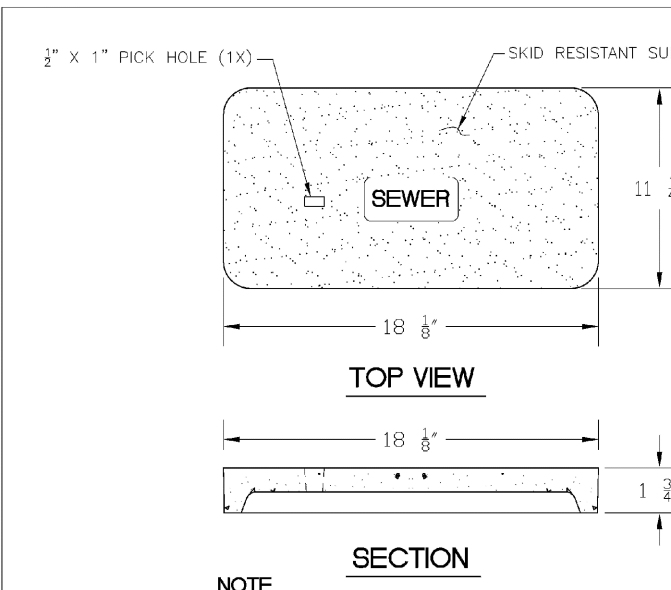
A MINIMUM HORIZONTAL SEPARATION, 3' (OUTSIDE TO OUTSIDE), SHALL BE MAINTAINED BETWEEN POTABLE WATER MAINS AND STORMWATER SEWERS, STORMWATER FORCE MAINS AND REGULATED REUSE WATER MAINS.



A MINIMUM HORIZONTAL SEPARATION OF 6' (OUTSIDE TO OUTSIDE), SHALL BE MAINTAINED BETWEEN POTABLE WATER MAINS AND EXISTING OR PROPOSED GRAVITY-OR PRESSURE-TYPE SANITARY SEWERS, WASTEWATER FORCE MAIN OR NOT REGULATED REUSE WATER MAIN. ** SEE NOTE D(1)(B).

MINIMUM HORIZONTAL SEPARATION REQUIREMENTS FOR POTABLE WATER, REUSE, STORMWATER AND SEWER LINES

ENGINEERING STANDARDS 2022			
REVISIONS	BY	DATE	ENGINEERING DIVISION
	S.S.	06/23/22	CITY OF POMPAÑO BEACH
SCALE: N.T.S.		DATE: JUNE 2022	209-1

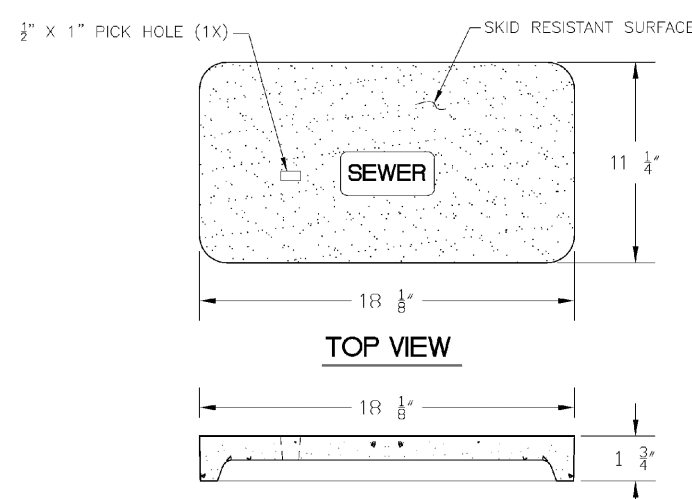


NOTE
1. MATERIAL: FIBERGLASS REINFORCED POLYMER CONCRETE & FIBERGLASS REINFORCED POLYMER
2. CO. OR. OR.FIN.
3. LOAD RATING: AS (ASTM C857)
4. LOAD: SEWER

SEWER BOX AND COVER

PRODUCT RATING - NON TRAFFIC					
LOAD DESIGNATION	DESCRIPTION	DESIGN LOADS		TESTING	
		LIVE & IMPACT (LIVE & IMPACT) (LBS/FT ²)	SAFE (LBS/FT ²)	LOADS (LBS/FT ²)	SAFETY FACTOR
AASHTO H10	LIGHT TRUCK TRAFFIC	8,000	10,400	22,568 (4)	2.82

ENGINEERING STANDARDS 2022			
REVISIONS	BY	DATE	ENGINEERING DIVISION
	S.S.	06/23/22	CITY OF POMPAÑO BEACH
SCALE: N.T.S.		DATE: JUNE 2022	210-1

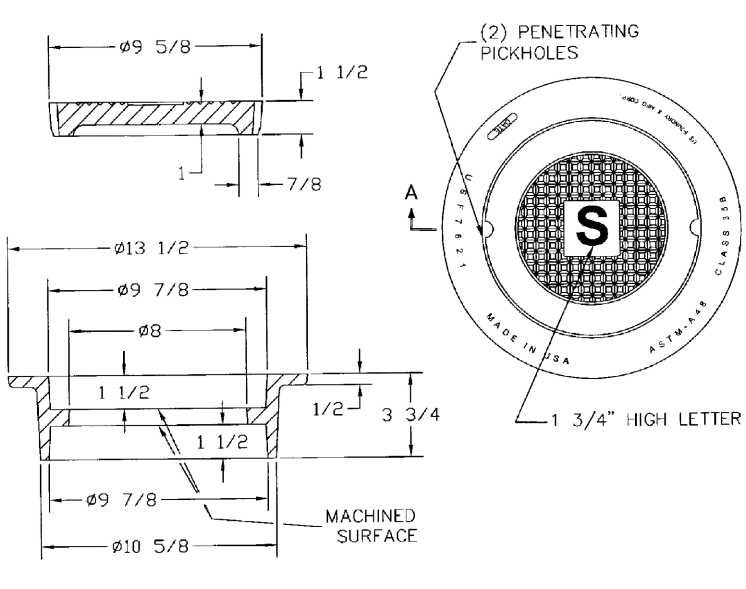


NOTE
1. MATERIAL: FIBERGLASS REINFORCED POLYMER CONCRETE & FIBERGLASS REINFORCED POLYMER
2. CO. OR. OR.FIN.
3. LOAD RATING: AS (ASTM C857)
4. LOAD: SEWER

SEWER BOX AND COVER

PRODUCT RATING - TRAFFIC					
LOAD DESIGNATION	DESCRIPTION	DESIGN LOADS		TESTING	
		LIVE & IMPACT (LIVE & IMPACT) (LBS/FT ²)	SAFE (LBS/FT ²)	LOADS (LBS/FT ²)	SAFETY FACTOR
AASHTO H15	MEDIUM TRUCK TRAFFIC	12,000	15,600	27,000 (5)	2.25

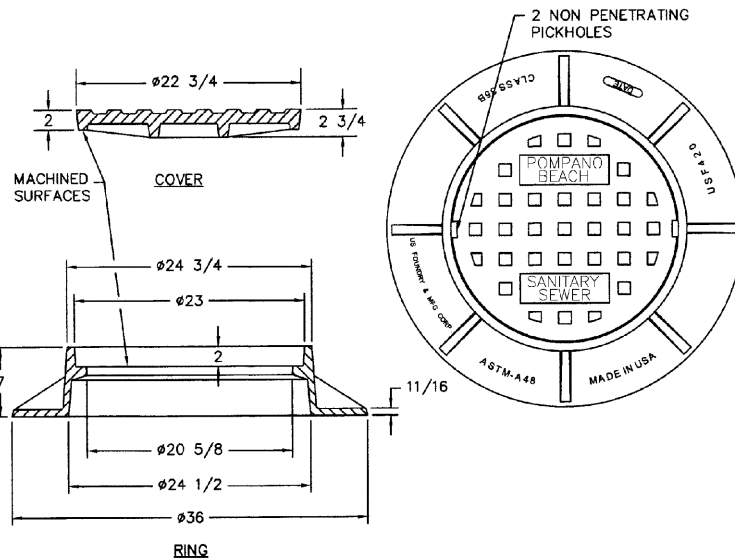
ENGINEERING STANDARDS 2022			
REVISIONS	BY	DATE	ENGINEERING DIVISION
	S.S.	JUNE 2022	CITY OF POMPAÑO BEACH
SCALE: N.T.S.		DATE: JUNE 2022	210-2



NOTE
MATERIAL: Gray Cast Iron
ASTM-A48 Class 35B

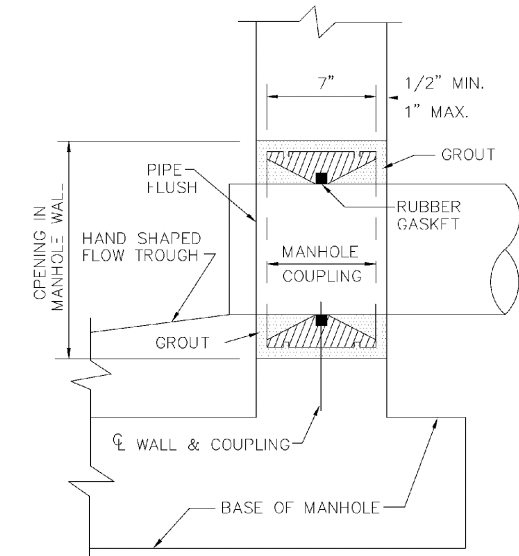
SEWER BOX AND COVER - HEAVY TRAFFIC

ENGINEERING STANDARDS 2022			
REVISIONS	BY	DATE	ENGINEERING DIVISION
	S.S.	06/23/22	CITY OF POMPAÑO BEACH
SCALE: N.T.S.		DATE: JUNE 2022	210-3



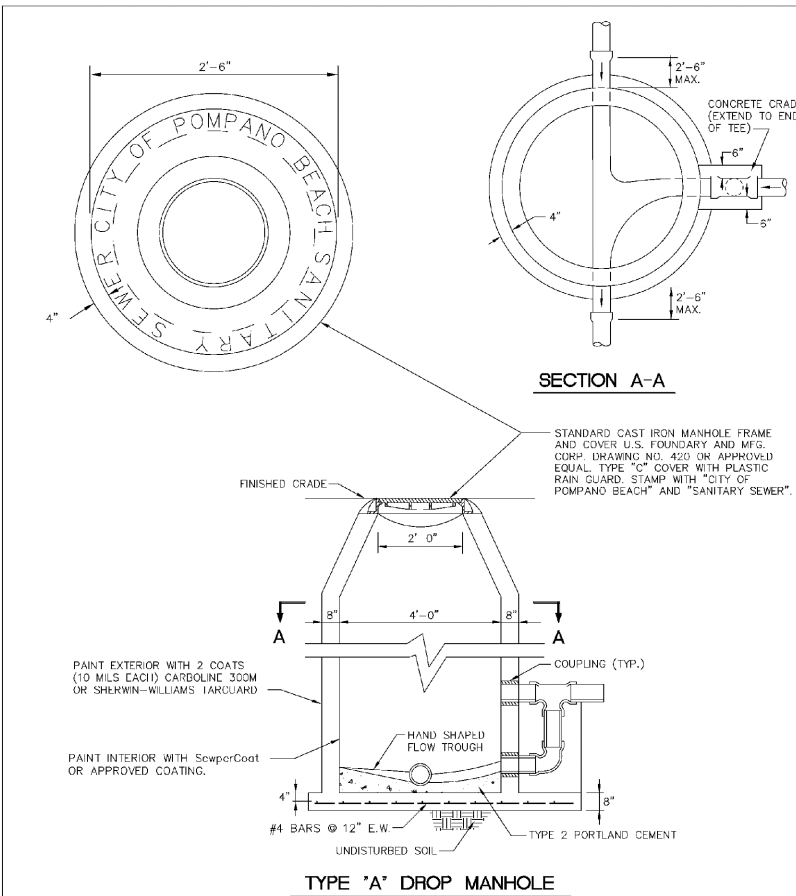
TRAFFIC RATED FRAME & COVER

ENGINEERING STANDARDS 2022			
REVISIONS	BY	DATE	ENGINEERING DIVISION
	S.S.	JUNE 2022	CITY OF POMPAÑO BEACH
SCALE: N.T.S.		DATE: JUNE 2022	211-1



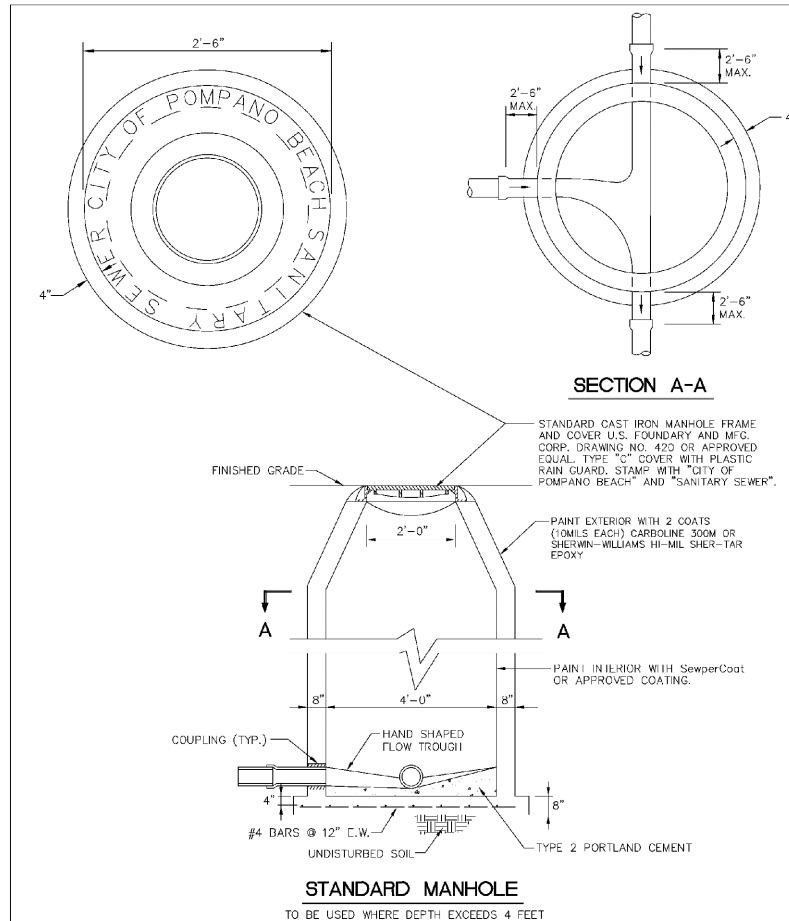
MANHOLE COUPLING

ENGINEERING STANDARDS 2022			
REVISIONS	BY	DATE	ENGINEERING DIVISION
	S.S.	JUNE 2022	CITY OF POMPAÑO BEACH
SCALE: N.T.S.		DATE: JUNE 2022	212-1



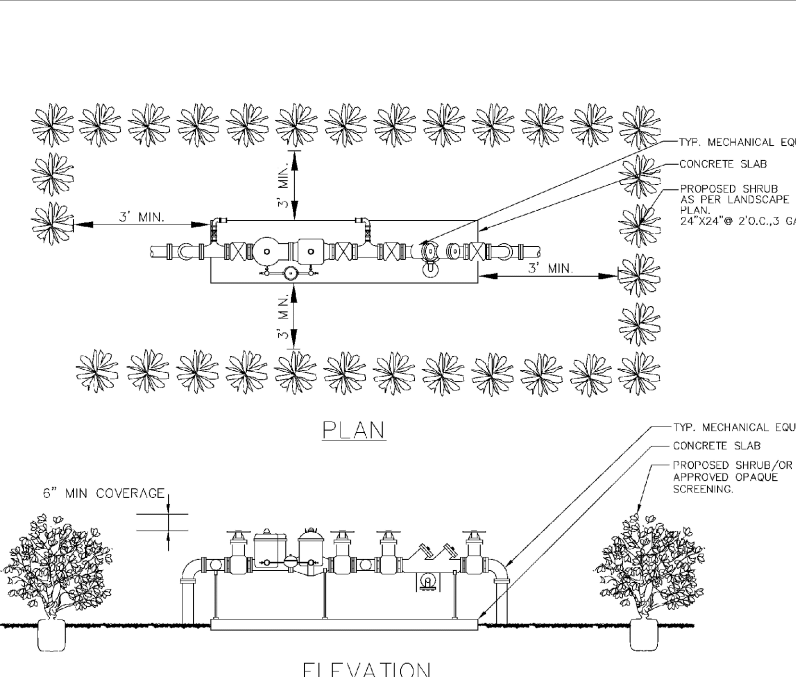
TYPE 'A' DROP MANHOLE

ENGINEERING STANDARDS 2022			
REVISIONS	BY	DATE	ENGINEERING DIVISION
	S.S.	JUNE 2022	CITY OF POMPAÑO BEACH
SCALE: N.T.S.		DATE: JUNE 2022	213-1



STANDARD MANHOLE

ENGINEERING STANDARDS 2022			
REVISIONS	BY	DATE	ENGINEERING DIVISION
	S.S.	JUNE 2022	CITY OF POMPAÑO BEACH
SCALE: N.T.S.		DATE: JUNE 2022	215-1

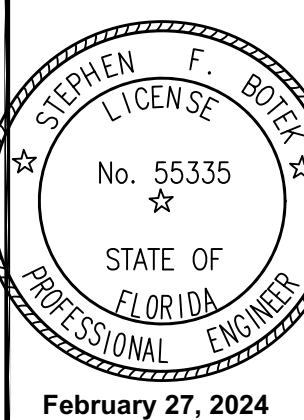


TYPICAL SCREEN FOR UTILITIES

ENGINEERING STANDARDS 2022			
REVISIONS	BY	DATE	ENGINEERING DIVISION
	S.S.	JUNE 2022	CITY OF POMPAÑO BEACH
SCALE: N.T.S.		DATE: JUNE 2022	315-1

Digitally signed by
Stephen Botek
Date: 2024.02.27
13:17:41
-05'00'

BTE REF DATE: 2-21-2024	
REVISIONS	DATE
#	



THIS DOCUMENT HAS BEEN DIGITALLY SIGNED AND SEALED BY STEPHEN F. BOTEK, P.E. ON THE DATE ADJACENT TO THE SEAL.

PRINTED COPIES OF THIS DOCUMENT ARE NOT CONSIDERED SIGNED AND SEALED AND THE SIGNATURE MUST BE VERIFIED ON ANY ELECTRONIC COPIES.

Celebrating
15 Years

WATER AND SANITARY SEWER DETAILS
POMPANO HOTEL
101 SOUTH OCEAN BOULEVARD
POMPANO BEACH, FL

Botek Thurlow Engineering, Inc.
3400 NW 9th Avenue, Suite 102, Ft. Lauderdale, FL 33309
www.botekthurlow-eng.com p: 954-568-8888 f: 954-568-0757

BTE PROJECT #:
23-0701

PROJECT DATE:
09-05-2023

SHEET #:
C-5